

# REMEX-KA6

M E D I C A L I M A G E S O L U T I O N

MEDICAL ULTRA PORTABLE X-RAY CAMERA



AUTHORISED REPRESENTATIVE - DISTRIBUTOR  
SUTHIPRI RESOURCES SDN BHD | 201501000758  
SUITE 33-01-23, 33RD FLOOR, MENARA KECK SENG  
203, JALAN BUKIT BINTANG, 55100 KUALA LUMPUR  
TEL: +603-21499241 FAX: +603-21165999  
EMAIL: [suthipri@gmail.com](mailto:suthipri@gmail.com) WEB: [www.suthipri.com.my](http://www.suthipri.com.my)  
MDA DEVICE REGISTRATION NO: GC6801423-116148

REMEDY

# REMEX-KA6

## ULTRA PORTABLE X-RAY CAMERA

with EXCLUSIVELY  
DESIGNED ACCESSORIES

**Superior Image quality  
with Low Radiation Exposure**



REMEX Main features

## Product Advantages

### 01 Expanded Clinical Coverage

- All parts of human body including adult and children chest, pelvis, abdomen, hands, feet and head
- Set up time under 1 minute

### 02 Minimized Radiation Exposure/Reduced Time

- Low dose product design and mechanism minimized radiation exposure for operators and patients
- Image acquisition under 3 seconds

### 03 Patented Adjustable Active Area Collimator

- Patented Collimator reduces leakage and scatter radiation

### 04 Superior Quality X-ray Image

- 70 kV : Improved image penetration > Improved bone identification
- 6 mA : Reduces required irradiation time > Reduces motion blurring
- 0.4 mm Focal Spot > High resolution

### 05 LED and Laser Guided Beam Function

- Helps users to pinpoint accurate exposure area



Low Dose



High Resolution



Light Weight



Wireless Smart Control



REMEX Main features

## Main Features

# 70kV

Improved image penetration

- ▶ Improved bone identification

# 6mA

Reduced required irradiation time

- ▶ Reduced motion blurring

# 0.4mm

Focal Spot

- ▶ High resolution

Safety report

## Safety Shielded Accessories

Leakage dose received in the shielding article application

**0.15** mGy/h

As leak radiation at 1m away from X-ray source  
 FDA Limits = 1mGy/h  
 CE Limits = 1mGy/h

Shielded Accessories ▼



A lead case



Lead gloves and arm sleeves



A lead apron

REMEX Main features

**Intended Use**

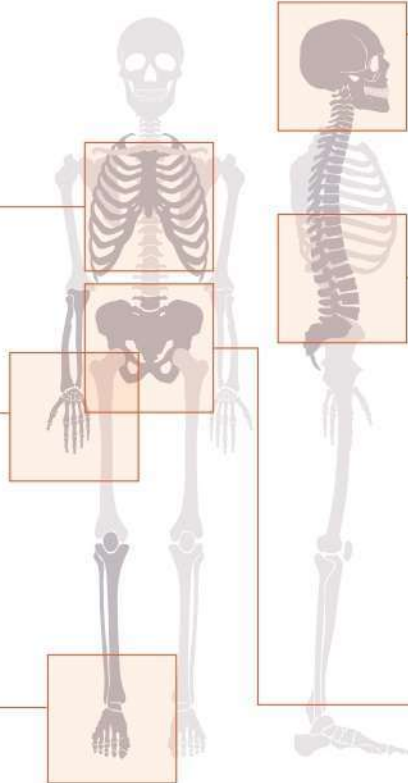
· REMEX Image Gallery



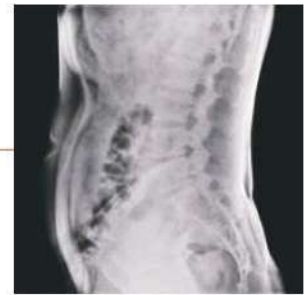
Chest



Extremities



Head



Abdomen

REMEX Field of Use

**Application field**



**Emergency room**



**Medical checkup**  
General Examination Room



**Home health care**



**NICU**  
Neonatal intensive care unit  
Pediatric care



**Orthopedics**  
Outpatient Clinic



**Respiratory medicine**  
Neonatal Intensive Care Unit



**Operating room**



**ICU**  
Intensive Care Unit



**TB Screening**



**Military field care**



**Ambulance**



**NPIR**  
Negative Pressure Isolation Room

REMEX Place of Use | Target of Use

## Anytime, Anywhere, Fast X-ray Image Solution

- **Portability** : It can be used anytime, anywhere for every patient.
- **Quick Access** : The lightweight X-ray generator has internal shielding, allowing for a low dose of radiation making it a safe and reliable device. It is ideal for timely and quick diagnosis for patients with limited mobility and for X-ray imaging in tight spaces.

REMEX Usage Environment

### Movable Stand

Radiography Systems



All Places | Emergency room



Anytime, Anywhere



### Bed | Mobile

Radiography Systems



Hospital Room · ICU · NPIR · Orthopedics



Shooting in bed

Emergency Room  
Hospital Room



### Station

Radiography Systems



General Examination · Respiratory · Triage



Chest/Head/Spine Image Solution

Pediatric  
Plastic Surgery  
Family Medicine



### Shielded Kiosk

Radiography Systems



Selective Care Center · Respiratory

COVID-19



Shooting in Shielded Kiosk

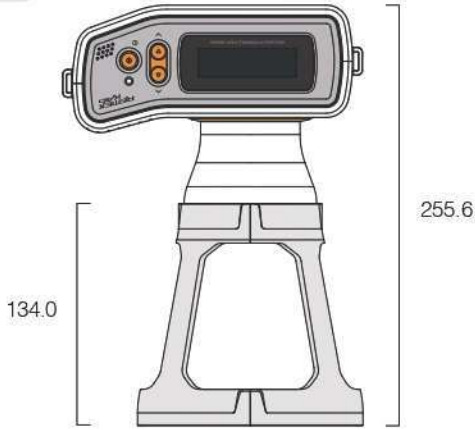
Public Health center



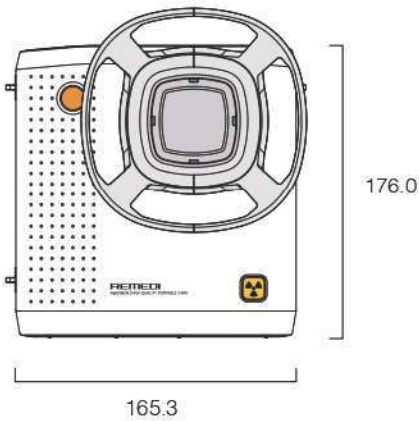
REMEX Specification  
**Specification**

Dimension

Top View



Front View

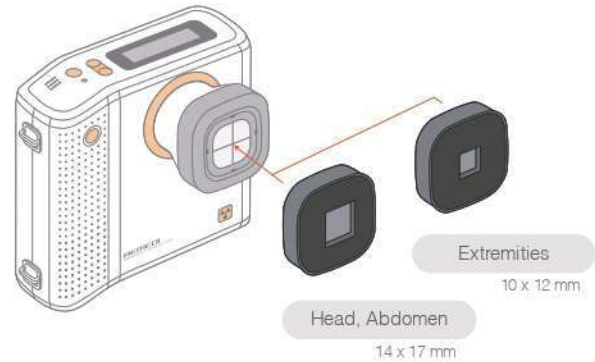


Specification of Device

Contents	Values
Tube kV/mA	40 ~ 70kV / 2~6mA
Exposure time	0.06 ~ 2.0sec
Focal Spot	0.4mm
Output Power	420W
Size	165.3 x 176.0 x 255.6mm
Weight	2.4kg
Battery	DC 22.2V / 1,800mAh

REMEX-KA6

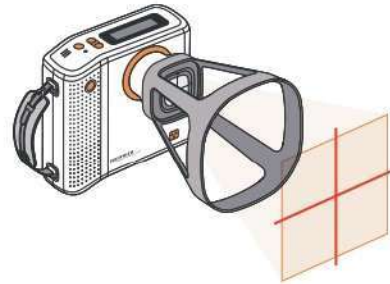
**Collimator** OPTION



REMEX Extra Features  
**Application**

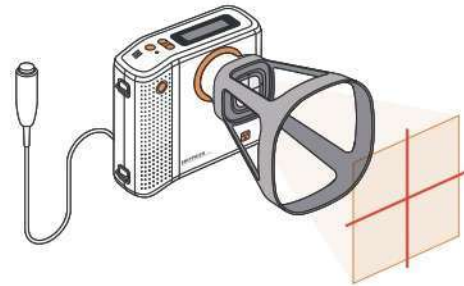
• **Direct Shoot**

Hand Strap  
 Using hand strap for direct shoot



• **Remote Switch**

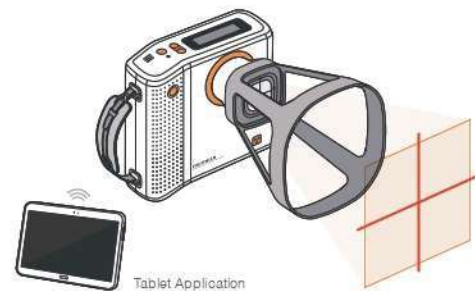
Hand Switch  
 Using exposure hand switch



• **Wireless Connection**

OPTION

- Wireless Connectivity with tablet and mobile phone
- Wireless X-ray exposure button adjustable time, kV, mA





MDA Device Registration No.: GC6801423-116148

REMEX Medical Package

**A** Portable X-Ray Digital Camera REMEX KA6 + Digital X-Ray Detector

MDA Device Registration No.: GB2980624-159257

**1417WCE · 1717WCE**

Medical X-ray Imaging Solution



	1417WCE	1717WCE
Sensor type		
Scintillator Type		
Pixel Pitch	<b>140µm</b>	
AcuDetect	0	0
MultiPixel	X	X
Glass Free	X	X
Battery Operating Time (hrs)		
Weight(kg) [not incl. battery]	≤ 2.5	≤ 3.2
Total Pixel Matrix (pixels)	2500 X 3052	3072x3072
Dimensions (mm)	384 X 460 X 15	460 X 460 X 15
A/D Conversion (bits)	16	16
Data interface		
Energy Range (kVp)		

### Xmaru Pro with AI

AI Chest X-ray support diagnosis system

- Automatically detects indications of major lesions during breast X-ray imaging, improving the overall accuracy and efficiency of the diagnosis
- Allows medical staff members to readily make decisions in X-ray imaging conditions

Supports image assessment by learning major abnormal indications that are often observed in breast X-ray images

Provides analysis information regarding the 5 main indications to determine the normality or abnormality; assists in the diagnosis of major lung diseases such as lung cancer, tuberculosis, and pneumonia through a combination of the detected indications.

## VUNO Med-Chest X-ray



AI-based diagnostic supporting solution for chest X-ray

The system analyzes the abnormality of five major findings to support doctors with the diagnosis of major lung diseases such as lung cancer, tuberculosis and pneumonia based on a combination of findings.